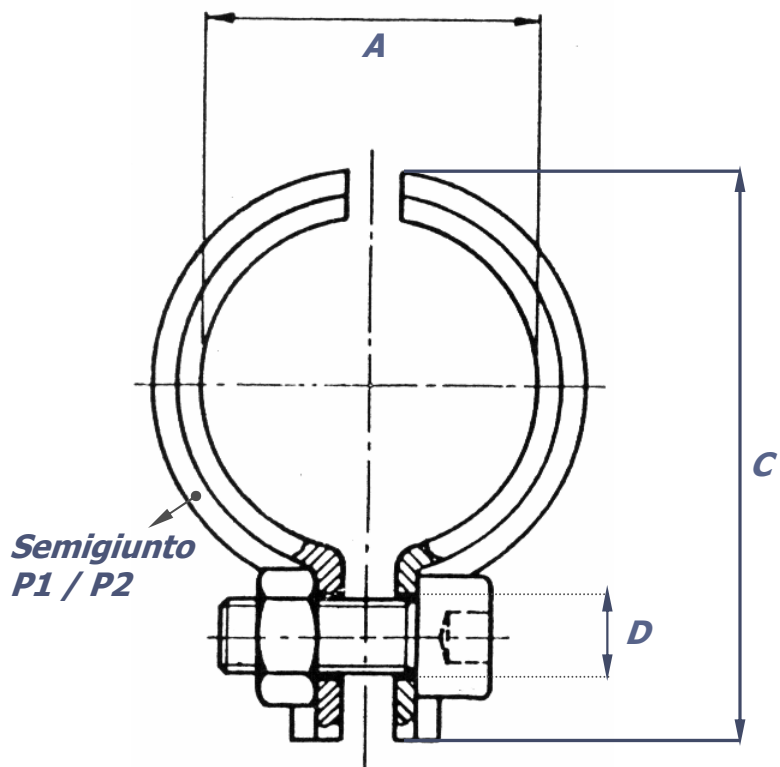




O.M.M. VENCI di Ing. Claudio VENCI
OFFICINA MECCANICA - FONDERIA
Via Piave, 36 – 20016 Pero (MI)
Tel. 02 38100162 – Fax. 02 33910761
e-mail: omm.venci@login.it

CATALOGO GIUNTI

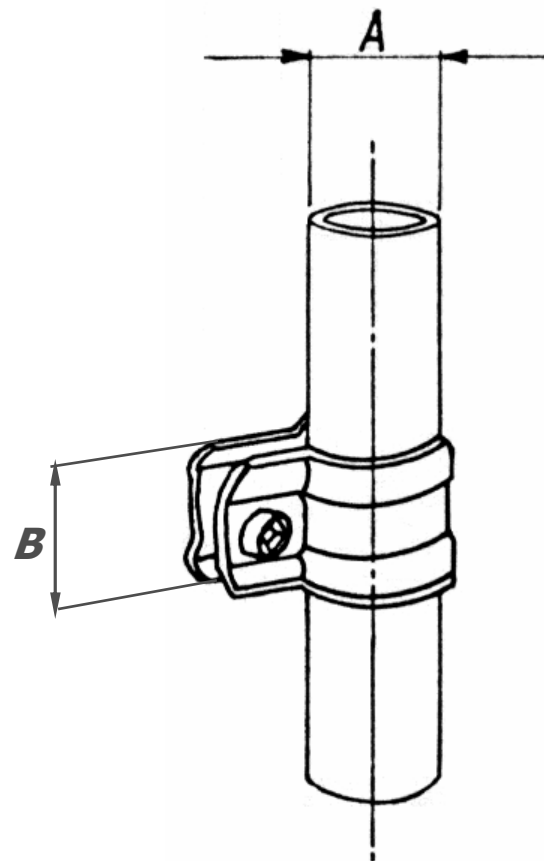
O.M.M. VENCI - GIUNTO "P" a 1 via



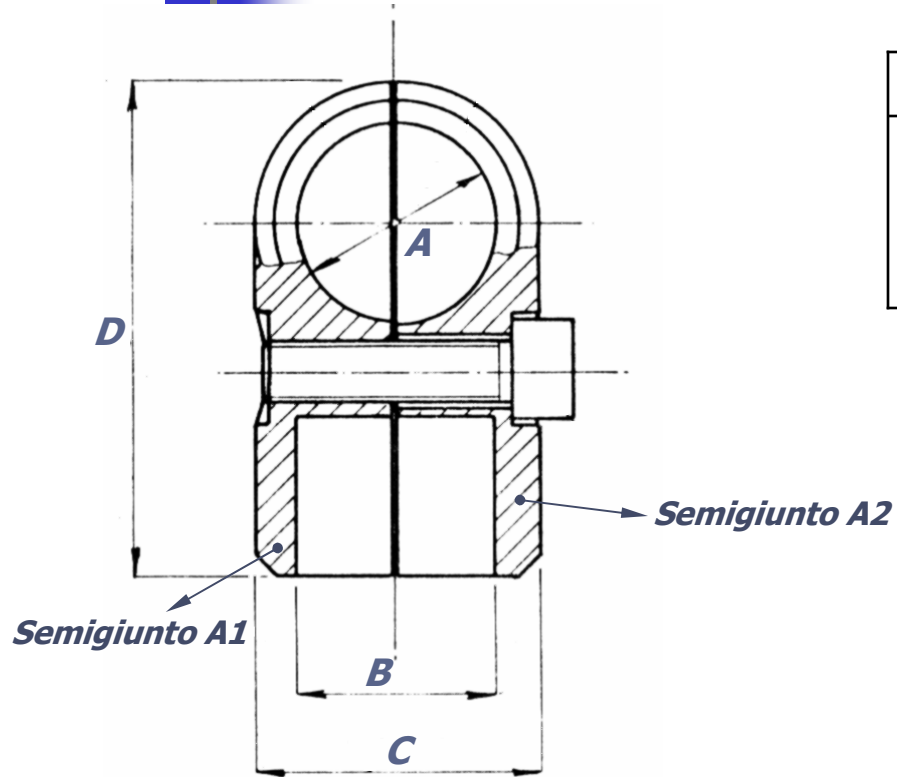
MATERIALE: Fe 37A UNI 5334 – Zn Bianco

TIPO	COMPOSIZIONE	COD.	Q.tà	A	B	C	D
P ₁ P ₂ d. 25	Semigiunto P ₁ d.25	V25P1	1	25	35	60	8.5
	Semigiunto P ₂ d.25	V25P2	1				
	Vite TE M8*20	VM0820	1	-			
	Dado M8	VD0800	1	-			

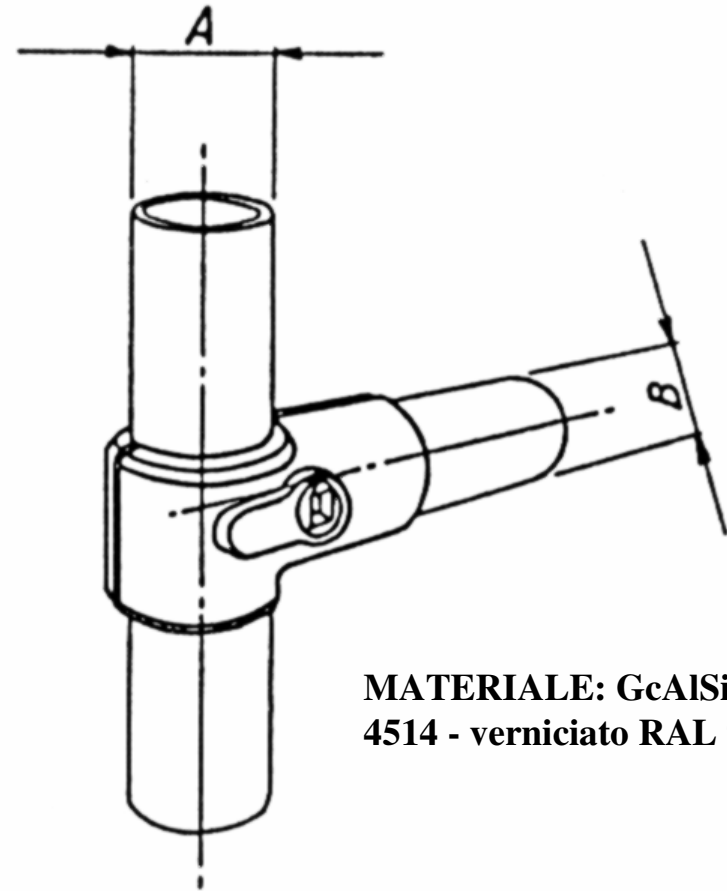
TIPO	COMPOSIZIONE	COD.	Q.tà	A	B	C	D
P ₁ P ₂ d. 35	Semigiunto P ₁ d.35	V35P1	1	35	40	70	8.5
	Semigiunto P ₂ d.35	V35P2	1				
	Vite TE M8*20	VM0820	1	-			
	Dado M8	VD0800	1	-			



O.M.M. VENCI - GIUNTO "A" a 3 vie



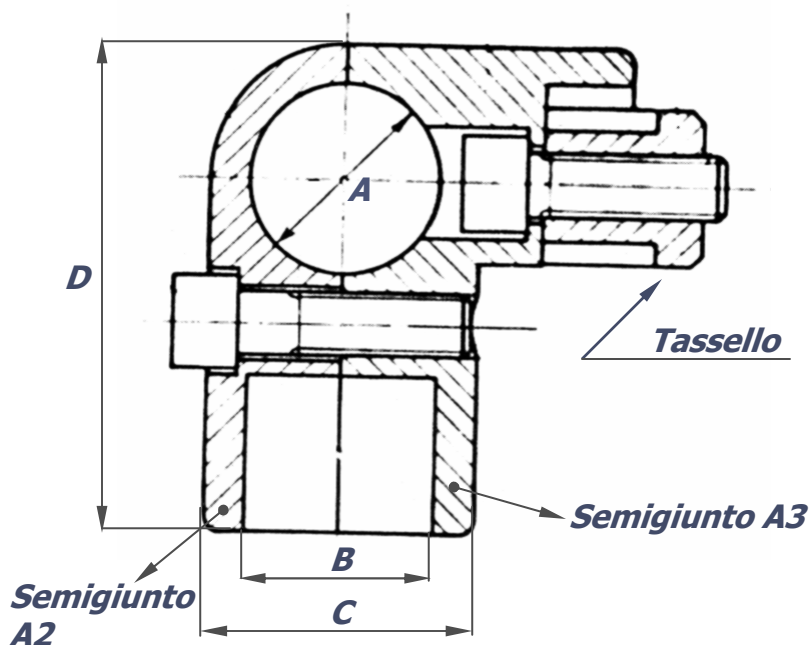
TIPO	COMPOSIZIONE	COD.	Q.tà	A	B	C	D
A ₁ A ₂ d. 25-35	Semigiunto A ₁ d.25-35	V23A1C	1	35	25	36	75
	Semigiunto A ₂ d.25-35	V23A2S	1				
	Vite TCEI M8*30	VM0830	1	-			



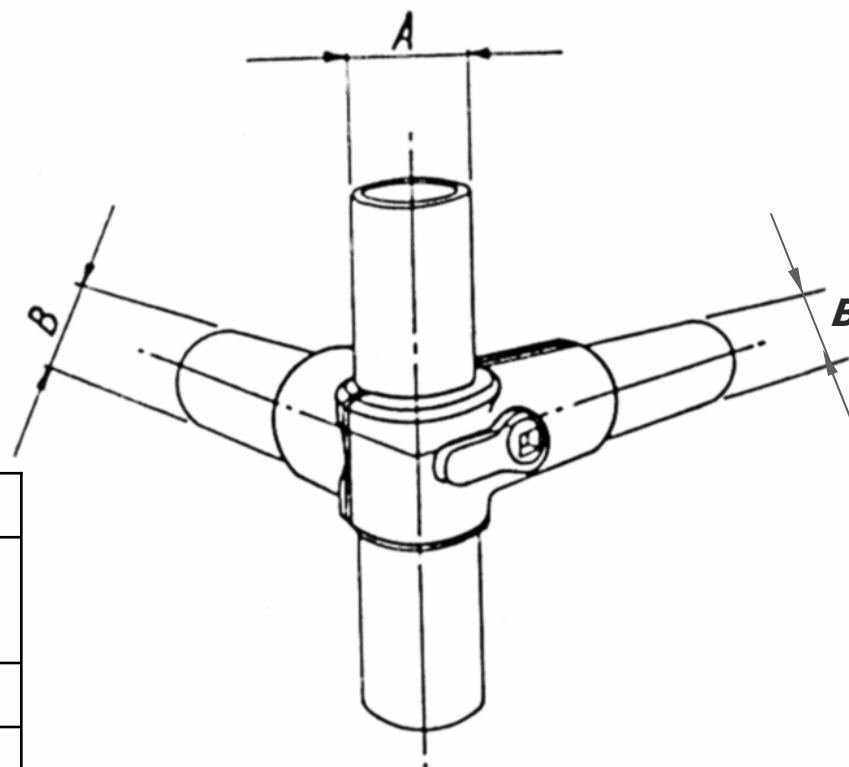
**MATERIALE: GcAlSi 13 UNI
4514 - verniciato RAL 9006**

TIPO	COMPOSIZIONE	COD.	Q.tà	A	B	C	D
A ₁ A ₂ d. 25	Semigiunto A ₁ d.25	V25A1C	1	25	25	36	65
	Semigiunto A ₂ d.25	V25A2S	1				
	Vite TCEI M8*30	VM0830	1	-			
A ₁ A ₂ d. 35	Semigiunto A ₁ d.35	V35A1C	1	35	35	48	85
	Semigiunto A ₂ d.35	V35A2S	1				
	Vite TCEI M10*45	VM1045	1	-			

O.M.M. VENCI - GIUNTO "A" a 4 vie



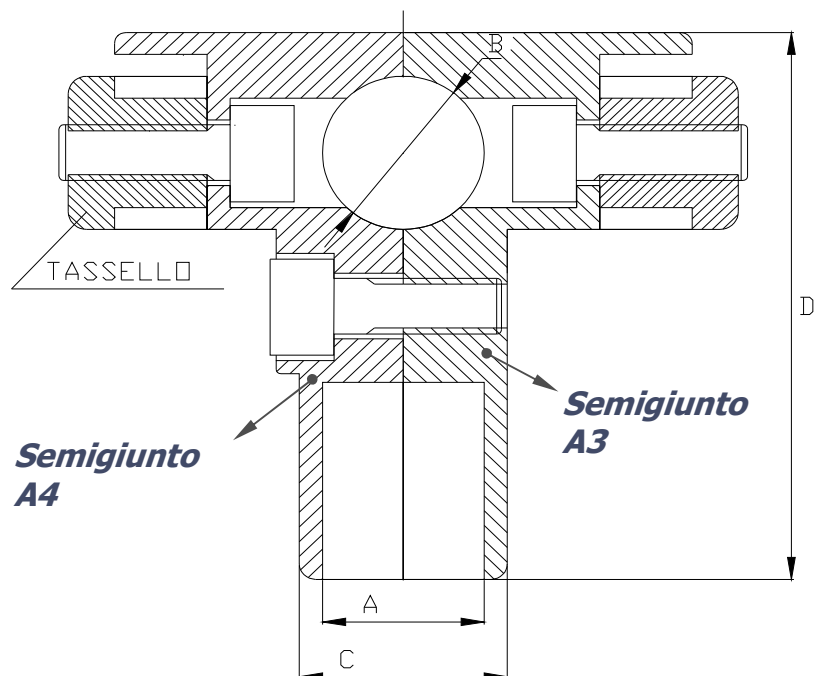
TIPO	COMPOSIZIONE	COD.	Q.tà	A	B	C	D
A ₂ A ₃ d. 35	Semigiunto A ₂ d.35	V35A2S	1	35	35	48	85
	Semigiunto A ₃ d.35	V35A3C	1				
	Tassello d.35	V35T00	1	Vedi "Tassello d.35"			
	Vite TCEI M10 * 35	VM1035	1	-			
	Vite TCEI M10 * 45	VM1045	1	-			



TIPO	COMPOSIZIONE	COD.	Q.tà	A	B	C	D
A ₂ A ₃ d. 25	Semigiunto A ₂ d.25	V25A2S	1	25	25	36	55
	Semigiunto A ₃ d.25	V25A3C	1				
	Tassello d.25	V25T00	1	Vedi "Tassello d.25"			
	Vite TCEI M8 * 25	VM0825	1	-			
	Vite TCEI M8 * 30	VM0830	1	-			

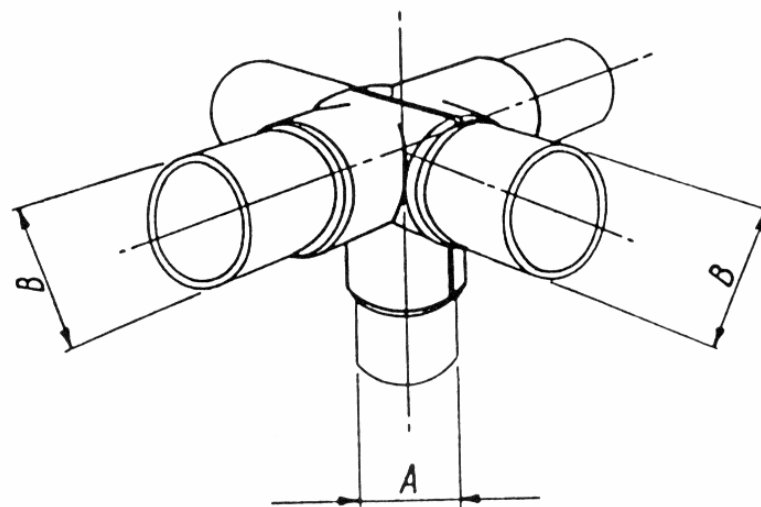
MATERIALE: GcAlSi 13 UNI 4514 -
verniciato RAL 9006

O.M.M. VENCI - GIUNTO "A" a 5 vie



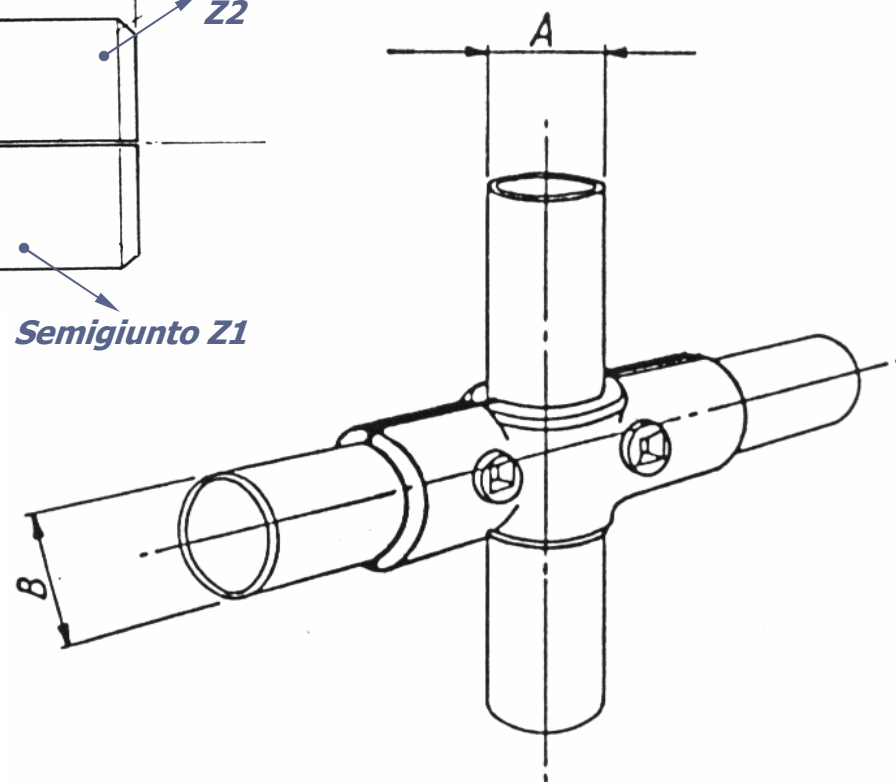
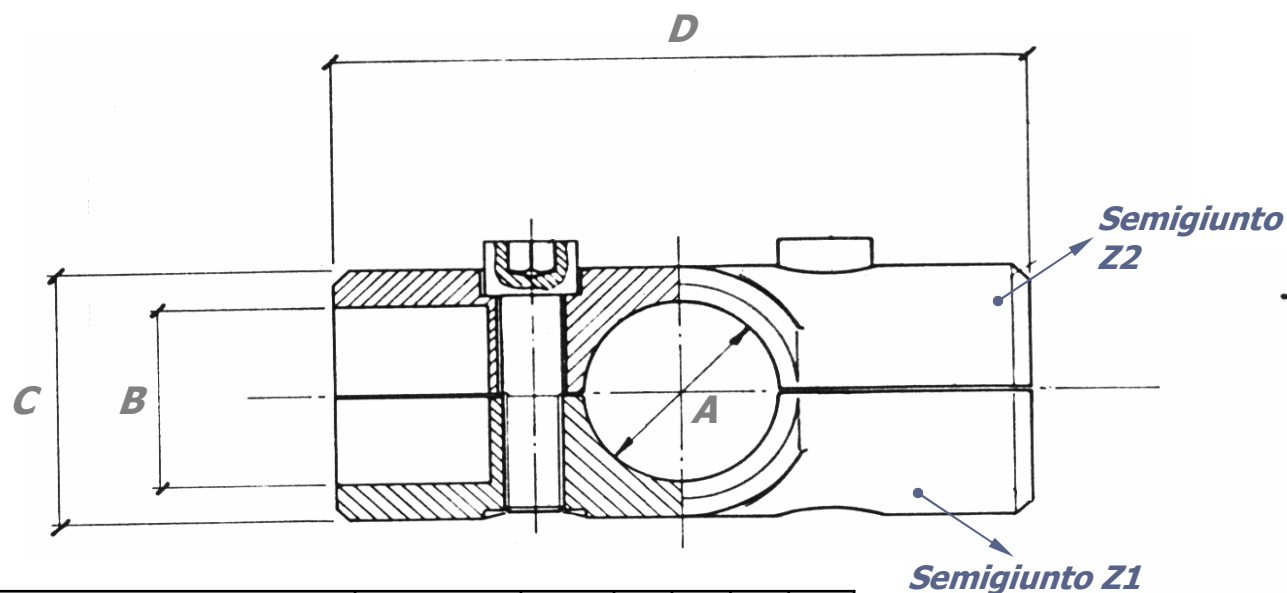
TIPO	COMPOSIZIONE	COD.	Q.tà	A	B	C	D
A ₃ A ₄ d. 25	Semigiunto A ₃ d.25	V25A3C	1	25	25	36	55
	Semigiunto A ₄ d.25	V25A4S	1				
	Tassello d.25	V25T00	2	Vedi "Tassello d.25"			
	Vite TCEI M8 * 25	VM0825	2	-			
	Vite TCEI M8 * 30	VM0830	1	-			

TIPO	COMPOSIZIONE	COD.	Q.tà	A	B	C	D
A ₃ A ₄ d. 35	Semigiunto A ₃ d.35	V35A3C	1	35	35	48	85
	Semigiunto A ₄ d.35	V35A4S	1				
	Tassello d.35	V35T00	2	Vedi "Tassello d.35"			
	Vite TCEI M10 * 35	VM1035	2	-			
	Vite TCEI M10 * 45	VM1045	1	-			



MATERIALE: GcAlSi 13 UNI 4514 - verniciato RAL 9006

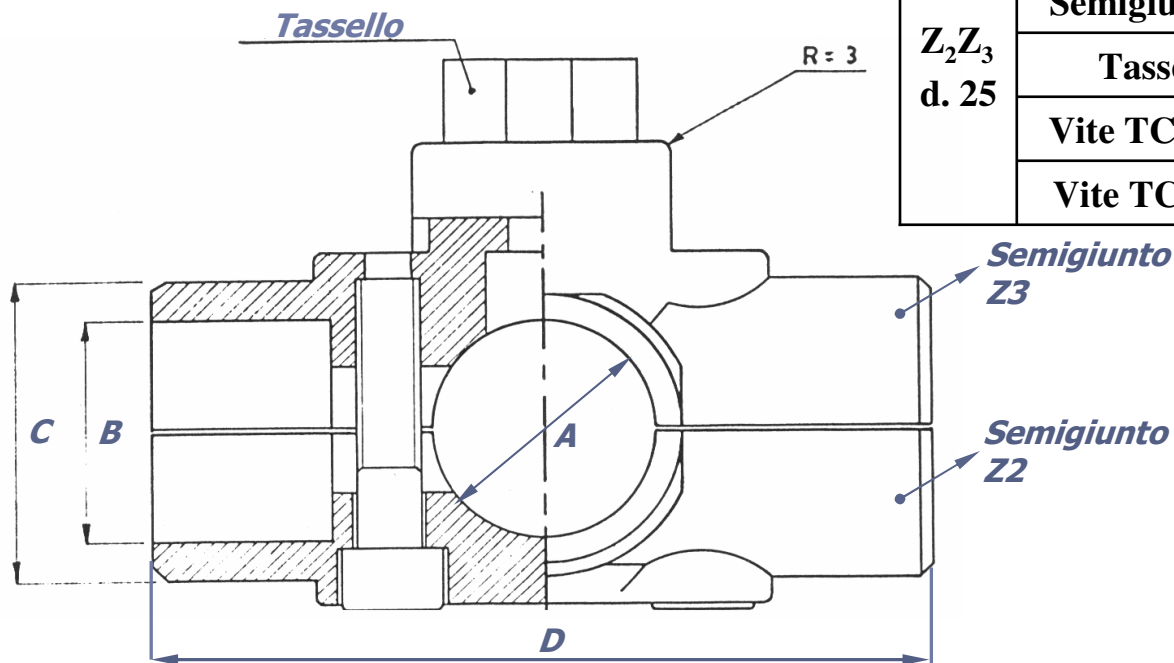
O.M.M. VENCI - GIUNTO "Z" a 4 vie



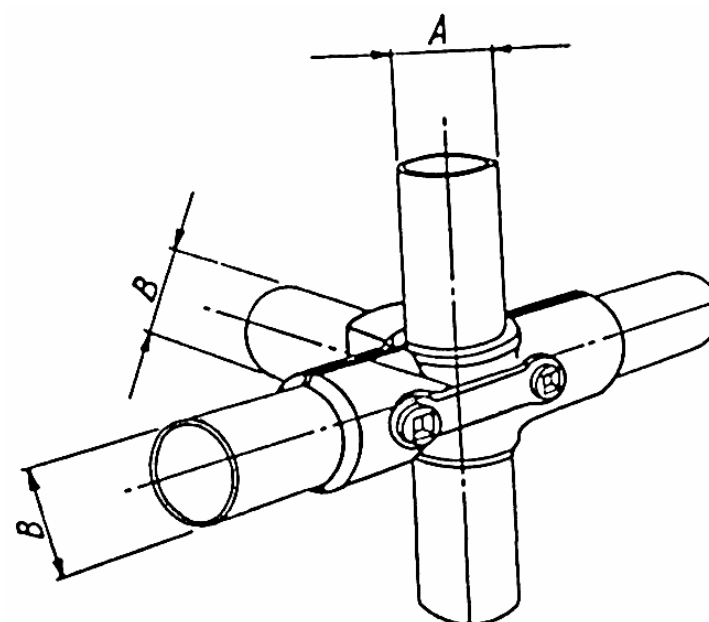
TIPO	COMPOSIZIONE	COD.	Q.tà	A	B	C	D
Z_1Z_2 d. 25	Semigiunto Z_1 d.25	V25Z1C	1	25	25	36	95
	Semigiunto Z_2 d.25	V25Z2S	1				
	Vite TCEI M8 * 30	VM0830	2	-			
Z_1Z_2 d. 35	Semigiunto Z_1 d.35	V35Z1C	1	35	35	48	122
	Semigiunto Z_2 d.35	V35Z2S	1				
	Vite TCEI M10 * 45	VM1045	2	-			
Z_1Z_2 d. 25-35	Semigiunto Z_1 d.25-35	V23Z1C	1	35	25	48	110
	Semigiunto Z_2 d.25-35	V23Z2S	1				
	Vite TCEI M8 * 30	VM0830	2	-			

MATERIALE: GcAlSi 13 UNI 4514 - verniciato RAL 9006

O.M.M. VENCI - GIUNTO "Z" a 5 vie



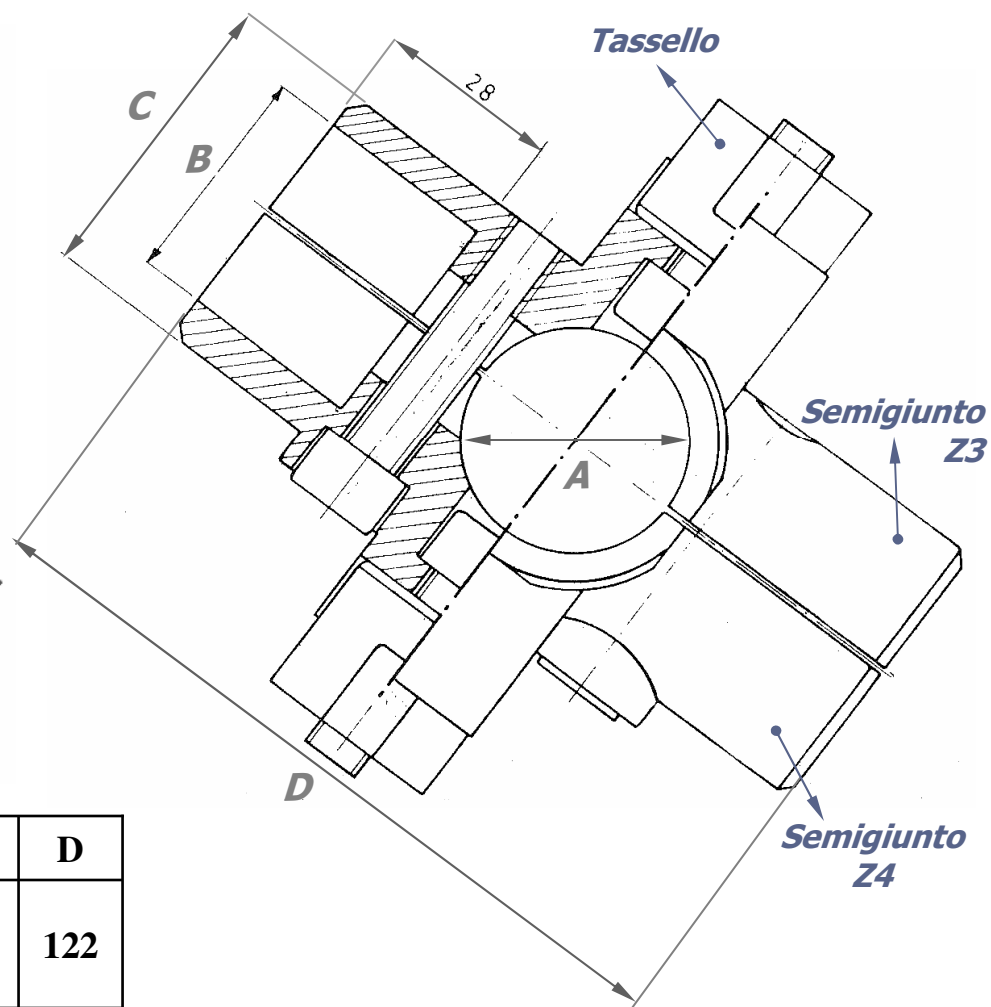
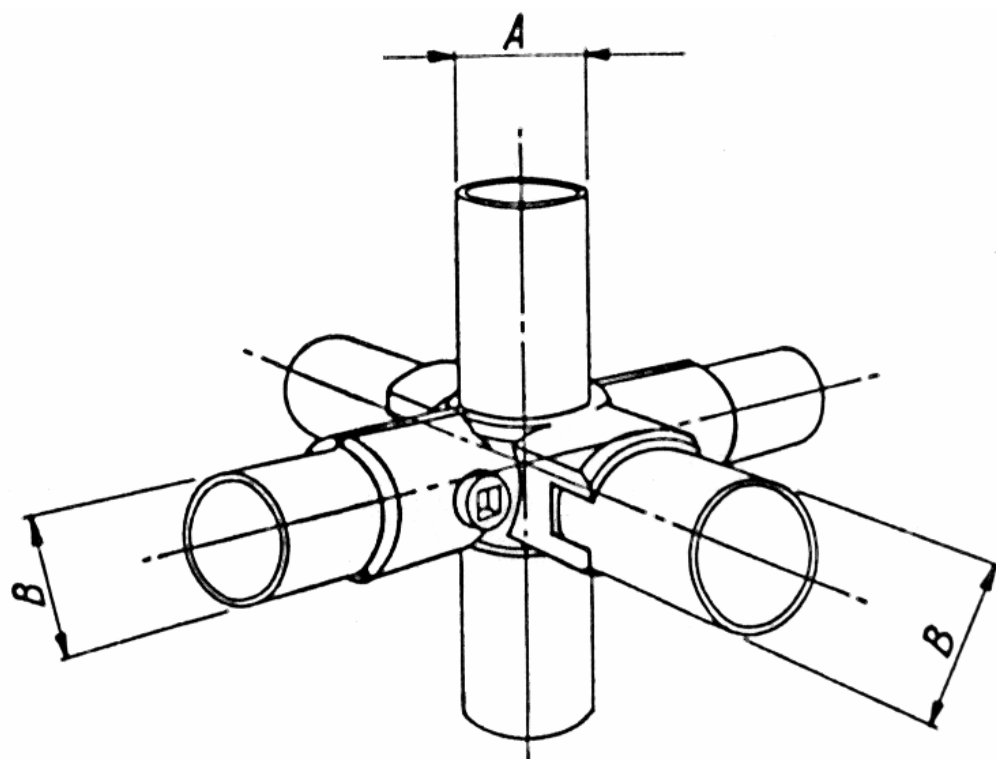
TIPO	COMPOSIZIONE	COD.	Q.tà	A	B	C	D
Z_2Z_3 d. 25	Semigiunto Z_2 d.25	V25Z2S	1	25	25	36	95
	Semigiunto Z_3 d.25	V25Z3C	1				
	Tassello d.25	V25T00	1	Vedi "Tassello d.25"			
	Vite TCEI M8 * 25	VM0825	1	-			
	Vite TCEI M8 * 30	VM0830	2	-			



TIPO	COMPOSIZIONE	COD.	Q.tà	A	B	C	D
Z_2Z_3 d. 35	Semigiunto Z_2 d.35	V35Z2S	1	35	35	48	122
	Semigiunto Z_3 d.35	V35Z3C	1				
	Tassello d.35	V35T00	1	Vedi "Tassello d.35"			
	Vite TCEI M10 * 35	VM1035	1	-			
	Vite TCEI M10 * 45	VM1045	2	-			

MATERIALE: GcAlSi 13 UNI 4514 - verniciato RAL 9006

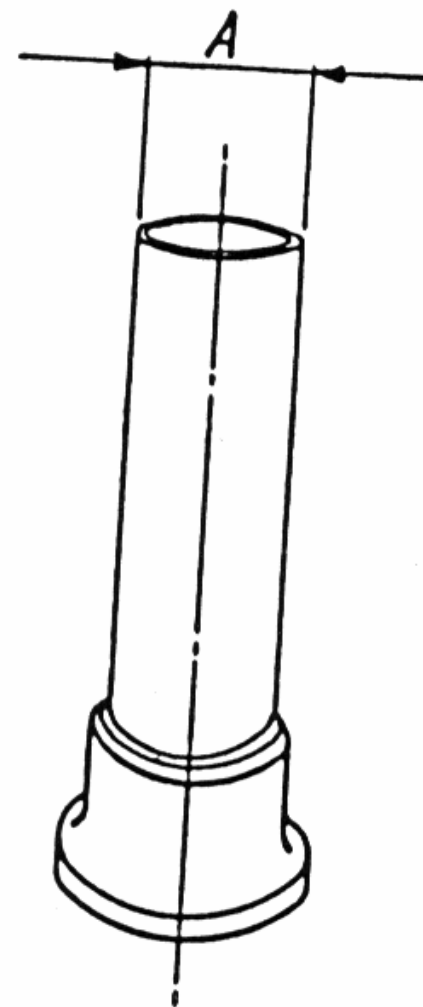
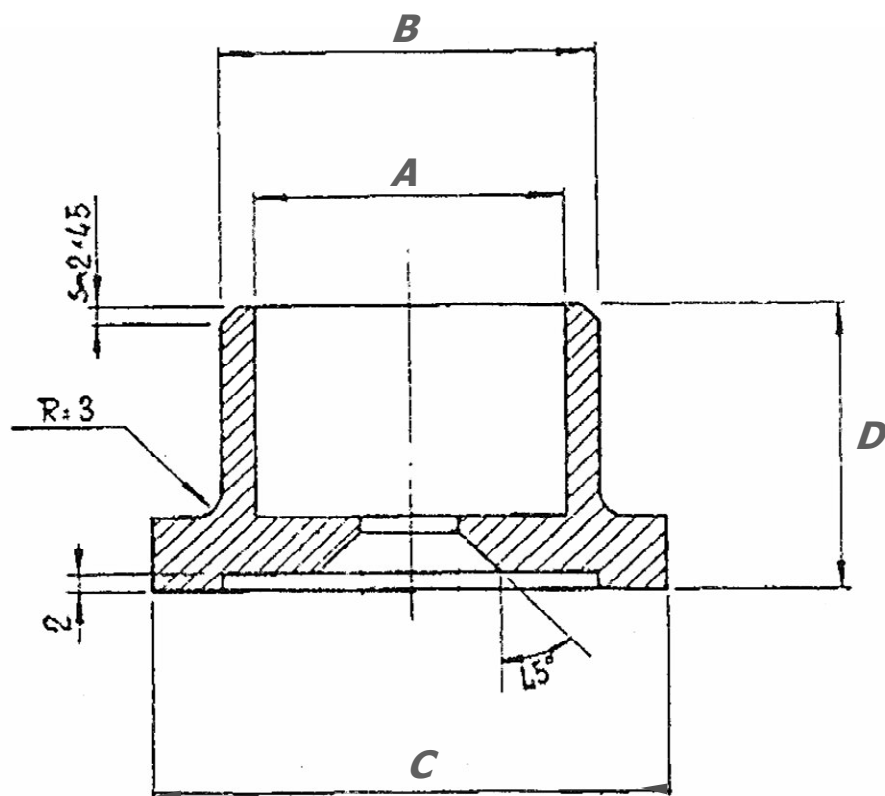
O.M.M. VENCI - GIUNTO "Z" a 6 vie



TIPO	COMPOSIZIONE	COD.	Q.tà	A	B	C	D
Z ₃ Z ₄ d. 35	Semigiunto Z ₃ d.35	V35Z3C	1	35	35	48	122
	Semigiunto Z ₄ d.35	V35Z4S	1				
	Tassello d.35	V35T00	2	Vedi "Tassello d.35"			
	Vite TCEI M10 * 35	VM1035	2	-			
	Vite TCEI M10 *45	VM1045	2	-			

**MATERIALE: GcAlSi 13 UNI 4514 -
verniciato RAL 9006**

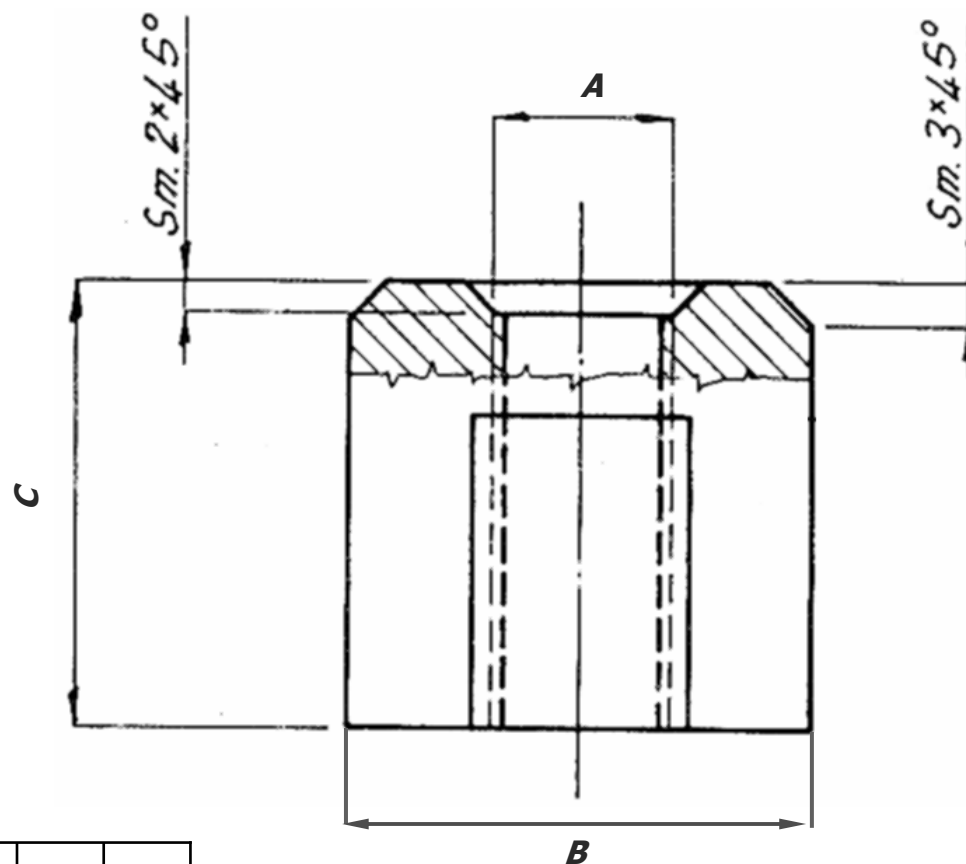
O.M.M. VENCI – BASE di ANCORAGGIO



TIPO	COMPOSIZIONE	COD.	Q.tà	A	B	C	D
B 25	Base d.25	V25B00	1	25	36	44	32
B 35	Base d.35	V35B00	1	35	46	62	36

MATERIALE: GcAlSi 13 UNI 4514 - verniciato RAL 9006

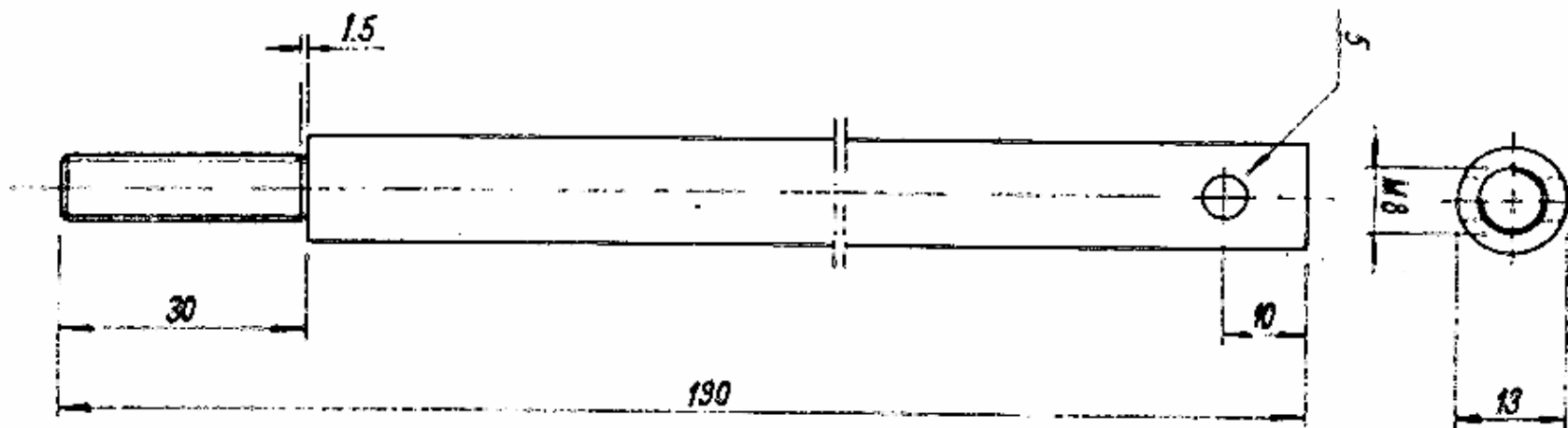
O.M.M. VENCI – TASSELLO di FISSAGGIO



TIPO	COMPOSIZIONE	COD.	Q.tà	A	B	C
T 25	Tassello d.25	V25T00	1	M8	20	22
T 35	Tassello d.35	V35T00	1	M10	30	26

MATERIALE: GcAlSi 13 UNI 4514

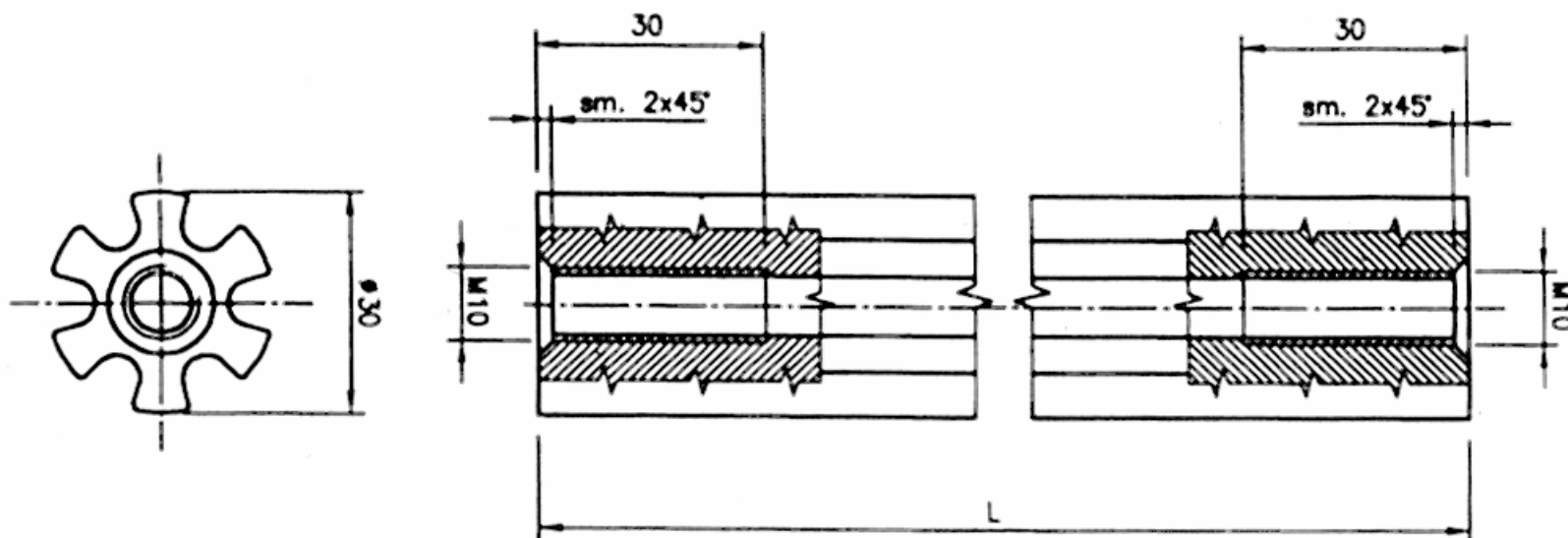
O.M.M. VENCI – GUIDACAVO



TIPO	COMPOSIZIONE	COD.
008	Guidacavo	VG8130

MATERIALE: Fe 37A UNI 7230 – Zn Bianco

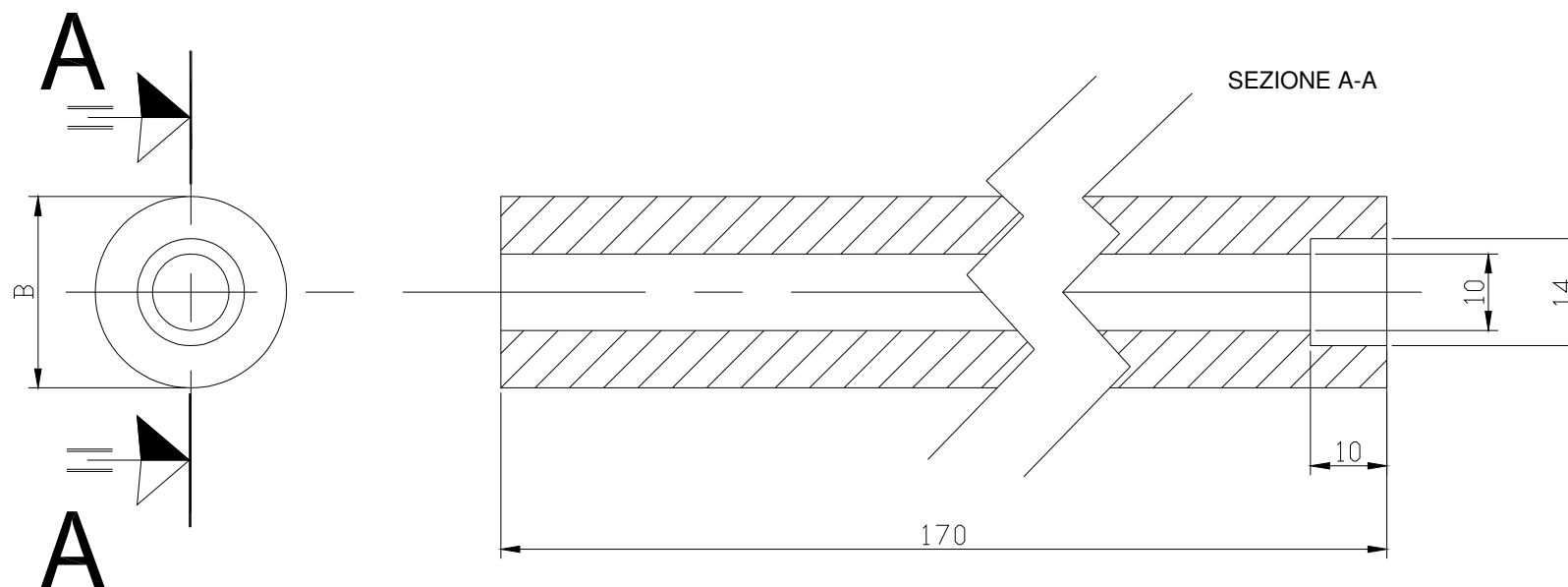
O.M.M. VENCI – PUNTONE STELLARE



TIPO	PARTICOLARE	COD.	L
S/175	Puntone stellare	VPS175	175
S/234	Puntone stellare	VPS234	234
S/267	Puntone stellare	VPS267	267

MATERIALE: Anticorodal 6060 T6

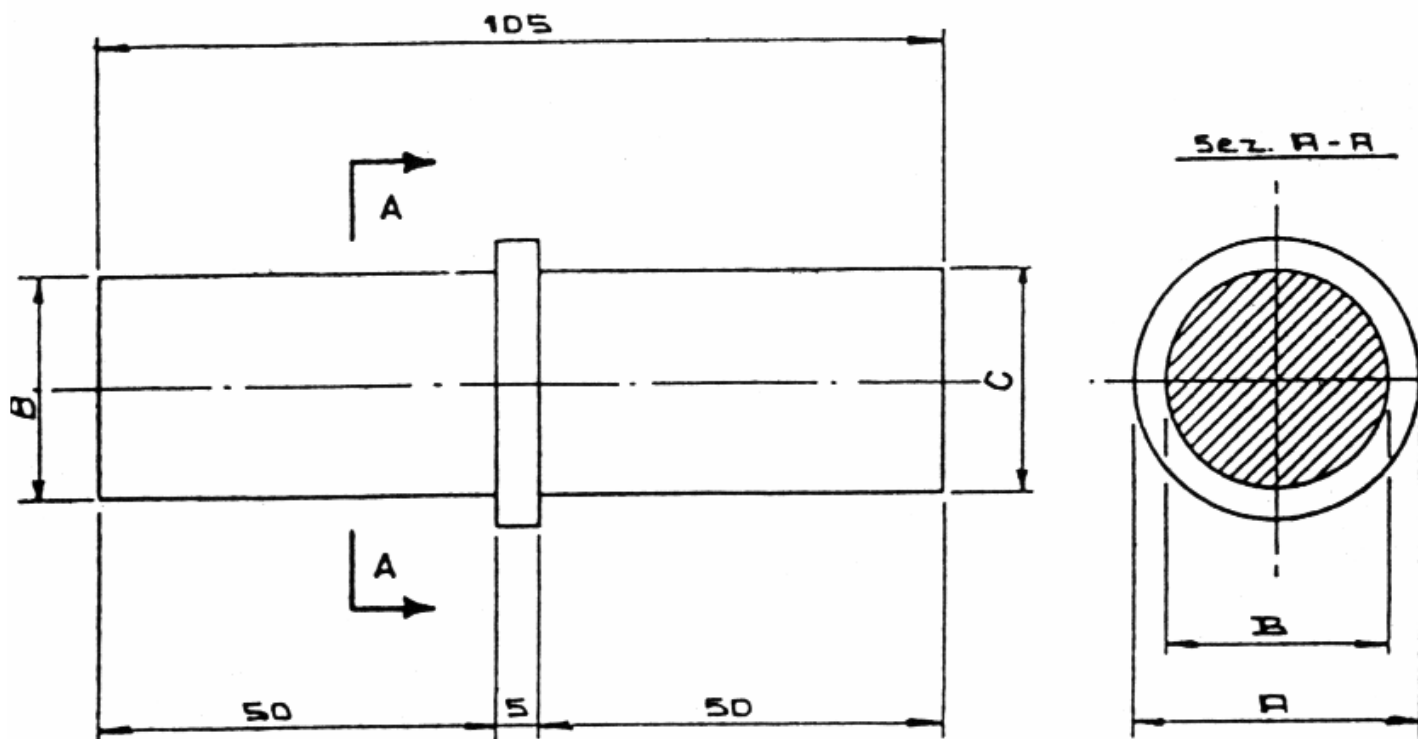
O.M.M. VENCI – PUNTONE LISCIO



TIPO	PARTICOLARE	COD.	B
PL/25	Puntone liscio d. 25	V25170	25
PL/35	Puntone liscio d. 35	V35170	35

MATERIALE: Anticorodal 6060 T6

O.M.M. VENCI – ELEMENTO di UNIONE

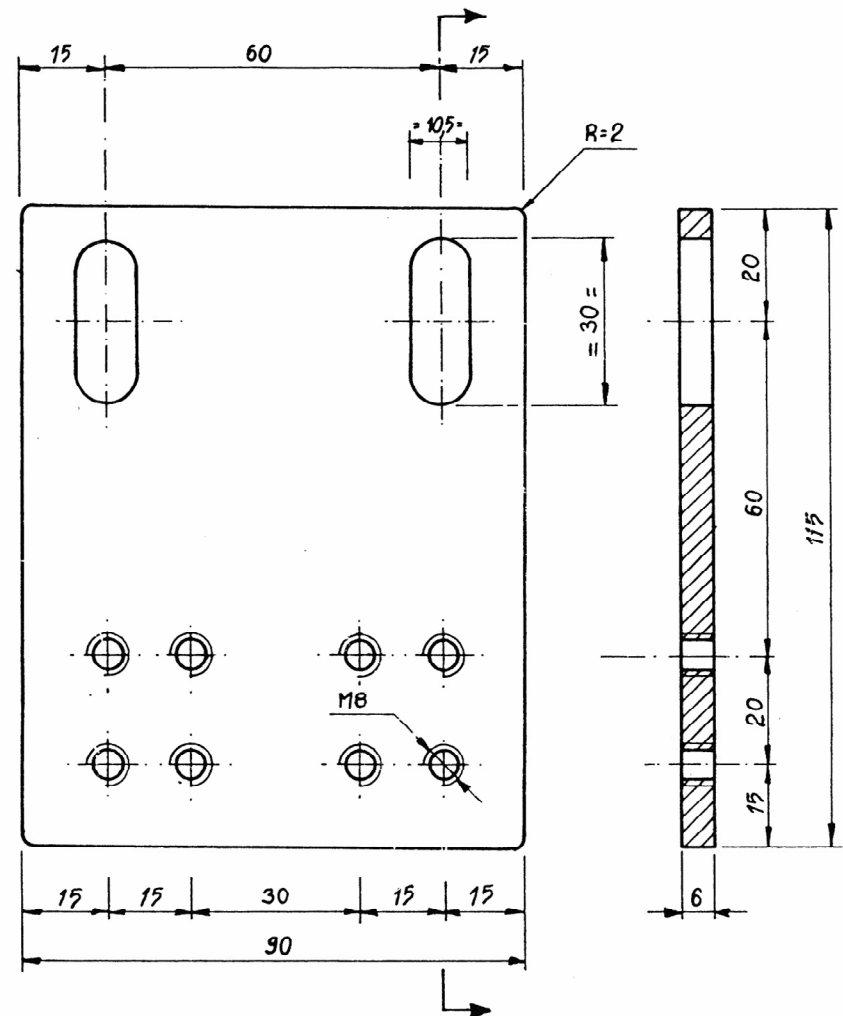


TIPO	PARTICOLARE	COD.	A	B	C
001	Elemento di unione 35/1	VEU351	35	26.8	26.8
002	Elemento di unione 35/2	VEU352	35	28.8	28.8
003	Elemento di unione 25/3	VEU253	25	20.8	20.8

MATERIALE: Fe 37A UNI 7230 – Zn Bianco

O.M.M. VENCI – ELEMENTO di UNIONE

TIPO	PARTICOLARE	COD.
001	Elemento piastra di unione	VEU90X115



MATERIALE: P AlSi 1 MgMn UNI 3571